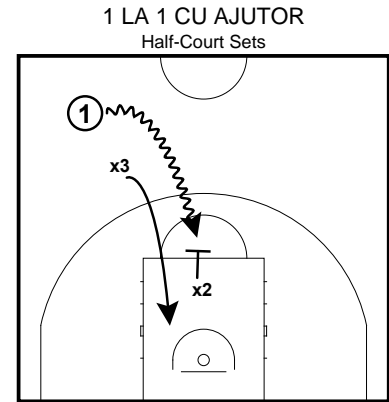
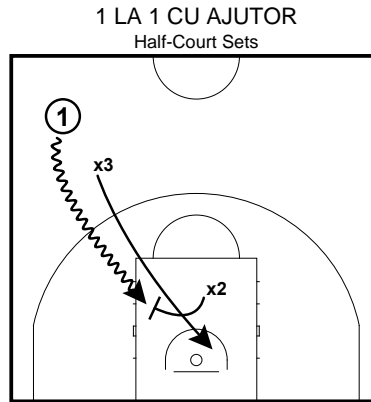
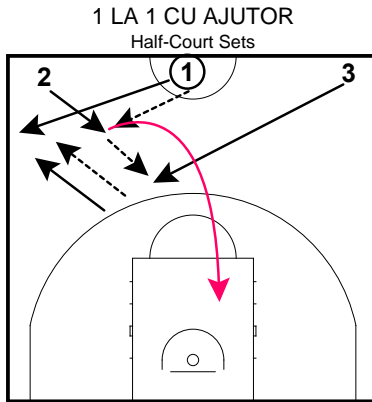


# DAN CALANCEA

## 1 LA 1 CU AJUTOR



1 LA 1 WITH HELP-BASELINE PENETRATION

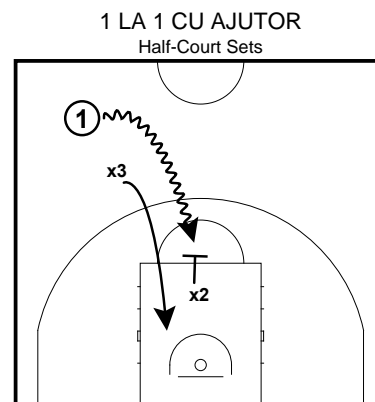
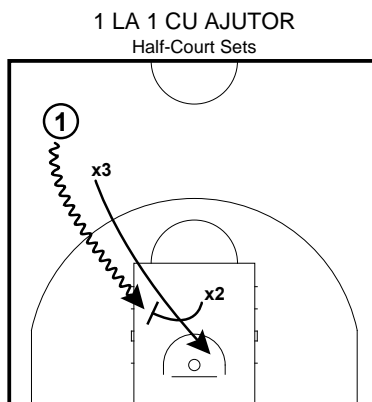
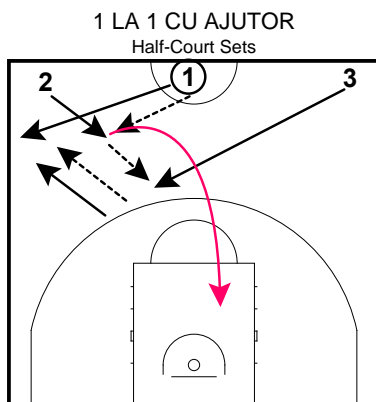
1 LA 1 CU AJUTOR -MIDDLE PENETRATION

1 PASEAZA LA 2 CARE TAIE SPRE MIJLOC. 1 URMEAZA PASA SI SE OPRESTE LANGA SIDELINE.  
2 PASEAZA LA 3, CARE TAIE IN DIRECTIA LUI 1. DUPA PAS 2 URMEAZA PASA SI TAIE IN SPATIUL DE TREI SECUNDE.  
3 PASEAZA LA 1 SI DEVINE APARATOR.  
1 INCEARCA SA INSCRIE , 3 APARA FORTAND SIDELINE . DACA 3 ESTE BATUT IN ORICE DIRECTIE 2 AJUTA.  
DUPA SUT AVEM REGULA D.

1

# DAN CALANCEA

## 1 LA 1 CU AJUTOR



1 LA 1 WITH HELP-BASELINE PENETRATION

1 LA 1 CU AJUTOR -MIDDLE PENETRATION

1 PASEAZA LA 2 CARE TAIE SPRE MIJLOC. 1 URMEAZA PASA SI SE OPRESTE LANGA SIDELINE.  
2 PASEAZA LA 3, CARE TAIE IN DIRECTIA LUI 1. DUPA PAS 2 URMEAZA PASA SI TAIE IN SPATIUL DE TREI SECUNDE.  
3 PASEAZA LA 1 SI DEVINE APARATOR.  
1 INCEARCA SA INSCRIE , 3 APARA FORTAND SIDELINE . DACA 3 ESTE BATUT IN ORICE DIRECTIE 2 AJUTA.  
DUPA SUT AVEM REGULA D.

1